



Chimpanzee Play

Chimpanzees spend much of their time resting and feeding in the trees but young chimpanzees also like to play on the ground and in the trees. In this activity you have the opportunity to create an activity depicting chimpanzees in gymnastic play swinging from a tree branch as they often do.

Materials needed:

1. Drawing of two young and one adult chimpanzee. (Must be photocopied on card stock in order to provide support and sturdiness)
2. Drawing of tree with branches (photocopied on cardstock in order to provide support and sturdiness.
3. 1 sheet of 8½ x 11 cardstock that should depict the surface on which the tree will be placed. (Choose cardstock that will depict a surface of grass or dirt).
4. Child-safe Scissors
5. Clear tape (both double and single sided)
6. Crayons or color pencils
7. Elmer's school glue or non-toxic glue
8. Decoration supplies in order to create the chimpanzee's natural environment such as pom poms or foam pieces to serve as shrubby, leaves and bushes or use twigs, sticks and leaves from outside.

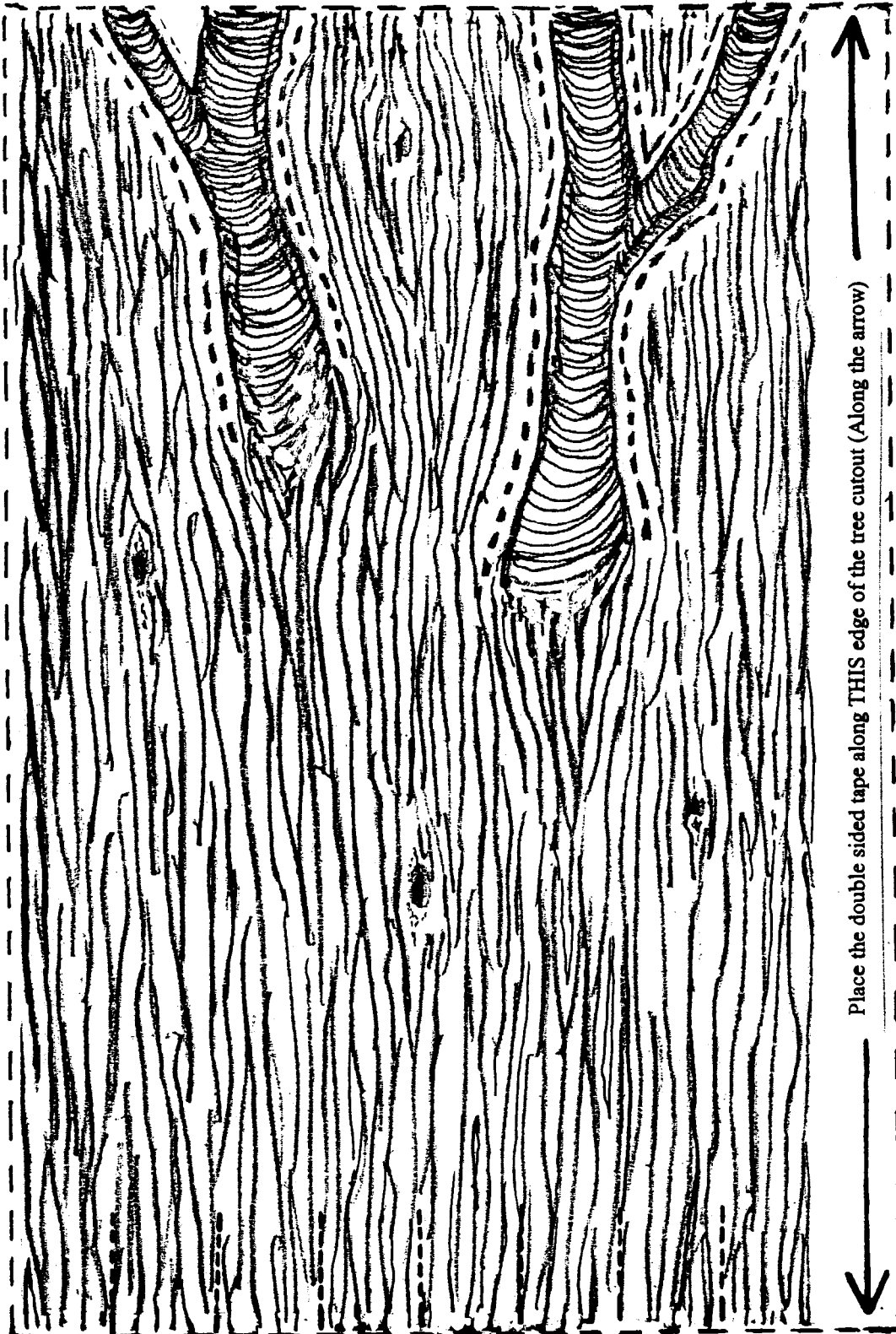
Additional materials and work prior to starting activity:

This activity can also be done with two trees instead of one or it can even be done with more than three chimpanzees. All you have to do is make more than one copy of the tree and the chimpanzees.



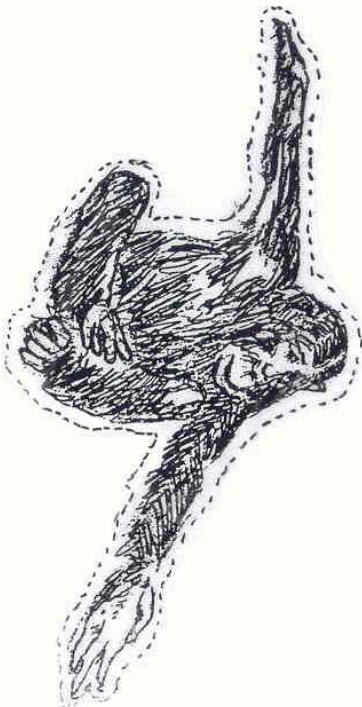
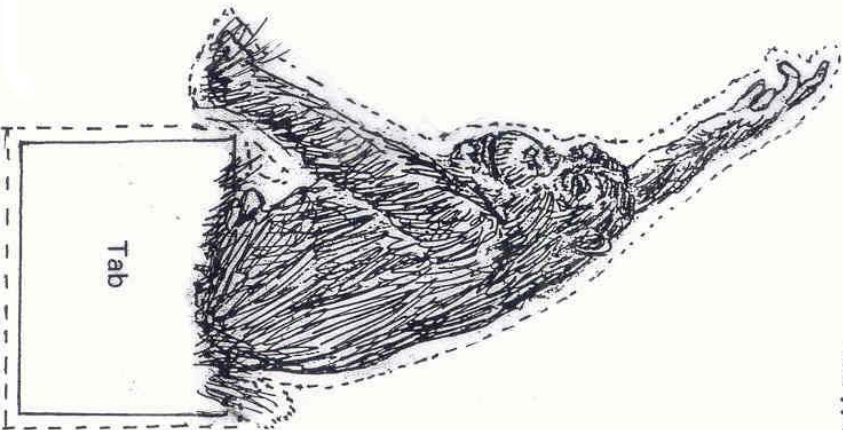
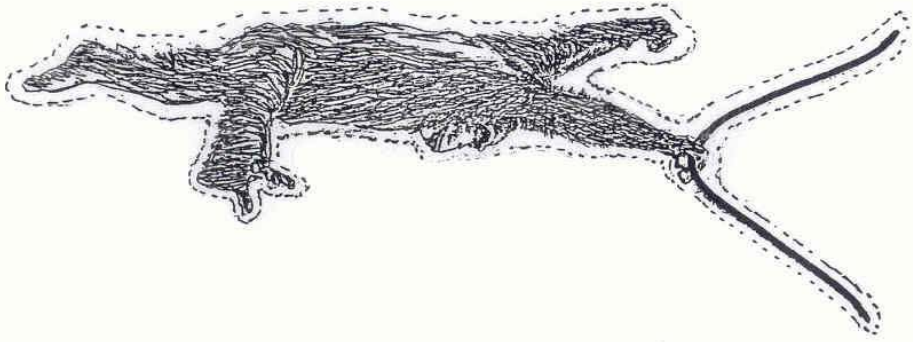
Steps to create activity

1. Photocopy the drawing of the two young and one adult chimpanzee on cardstock.
2. Color the chimpanzees and the tree with crayons or color pencils. Cut out the tree and chimpanzees and decorate both with crayons or color pencils.
3. Cut out the tree carefully cutting around the tree branches at the top of the tree and the dotted lines at the bottom of the tree without detaching them from the tree trunk. The cut outs at the bottom of the tree will help keep the tree in place. Make sure to only cut along the dotted lines and stop where the dotted lines indicate you should stop. You will end up with a total of two branches at the top and eight sections at the bottom.
4. Cut out the chimpanzees making sure not to cut off the tabs at the bottom of the figures because you will need it to attach the chimpanzees to the surface or tree branches.
5. Take double-sided tape and place it along the edge of the tree cutout. The area where the tape should be placed is labeled.
6. Take the tree cutout and roll it up in order to form a cylinder, similar to a paper towel roll. Make sure to roll the tree cutout instead of folding it. The dotted lines at the bottom of the tree will serve as the roots of the tree.
7. Following the instructions above you will avoid making ceases in the tree cutout. As you roll it place the left side edge of the tree cutout over the right side edge, where you placed the double-sided tape. Both sides should overlap. Press both sides together and apply pressure. This will ensure that the two sides are securely taped in place.
8. Using the cardstock that you selected as your surface (grass or dirt), choose where on the surface you would like your tree to stand (center, corner, or side). Once you have your surface handy and you've decided where on the surface you would like the tree to be positioned, bend the roots of the tree outward so that they can serve as support for the tree on the surface.
9. Tear small pieces of double-sided tape and place them underneath each individual root of the tree cutout. Press down to ensure that the roots are securely in place. At this point you have made a self-standing tree on a surface.
10. Bend the two branches outward (towards you).
11. Place the cutouts of the three chimpanzees on the tree and/or surface and decide whether you want them to be in the branches or on the surface. Keep in mind that one chimpanzee has a vine in his hand and the suggestion is that this particular chimpanzee should be swinging from a tree branch. The other two could be swinging from the tree or resting or on the ground.
12. Place the chimpanzees on the surface and the tree as you choose with tape or glue. When placing the chimpanzee holding the vine onto the tree, make sure to fold over the very tips of the vine (they will act as hooks to secure the chimpanzee in place). Tape the swinging chimpanzee to the tree branch.
13. Create a natural environment for the chimpanzees with pom poms or natural vegetation, leaves and rocks. Glue your decorations in place to finish the landscape of your choice.



Chimpanzees' Playing Tree – cut out along dotted line

Chimpanzee Acrobatic Play



cut out along dotted line